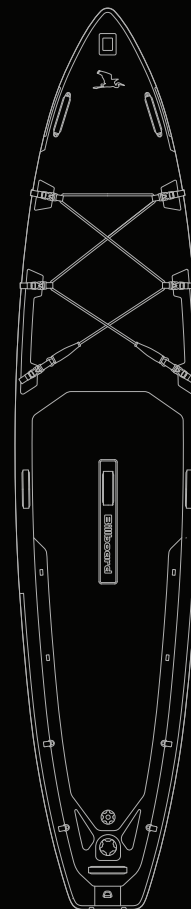


Billboard H4

HERON 4 METER EXPEDITION PADDLE BOARD

USER GUIDE



BILLBOARD HERON 4 METER "THE H4"

INFLATABLE EXPEDITION STAND UP PADDLEBOARD

BORN ON THE RIVER THAMES IN LONDON - THE ULTIMATE URBAN EXPLORER BOARD.

THE H4 IS A STABLE YET FAST BOARD THAT TRACKS WELL AND CAN CARRY

LOTS OF EQUIPMENT FOR ADVENTURES FAR BEYOND THE CITY.

SCANDINAVIAN DESIGN.

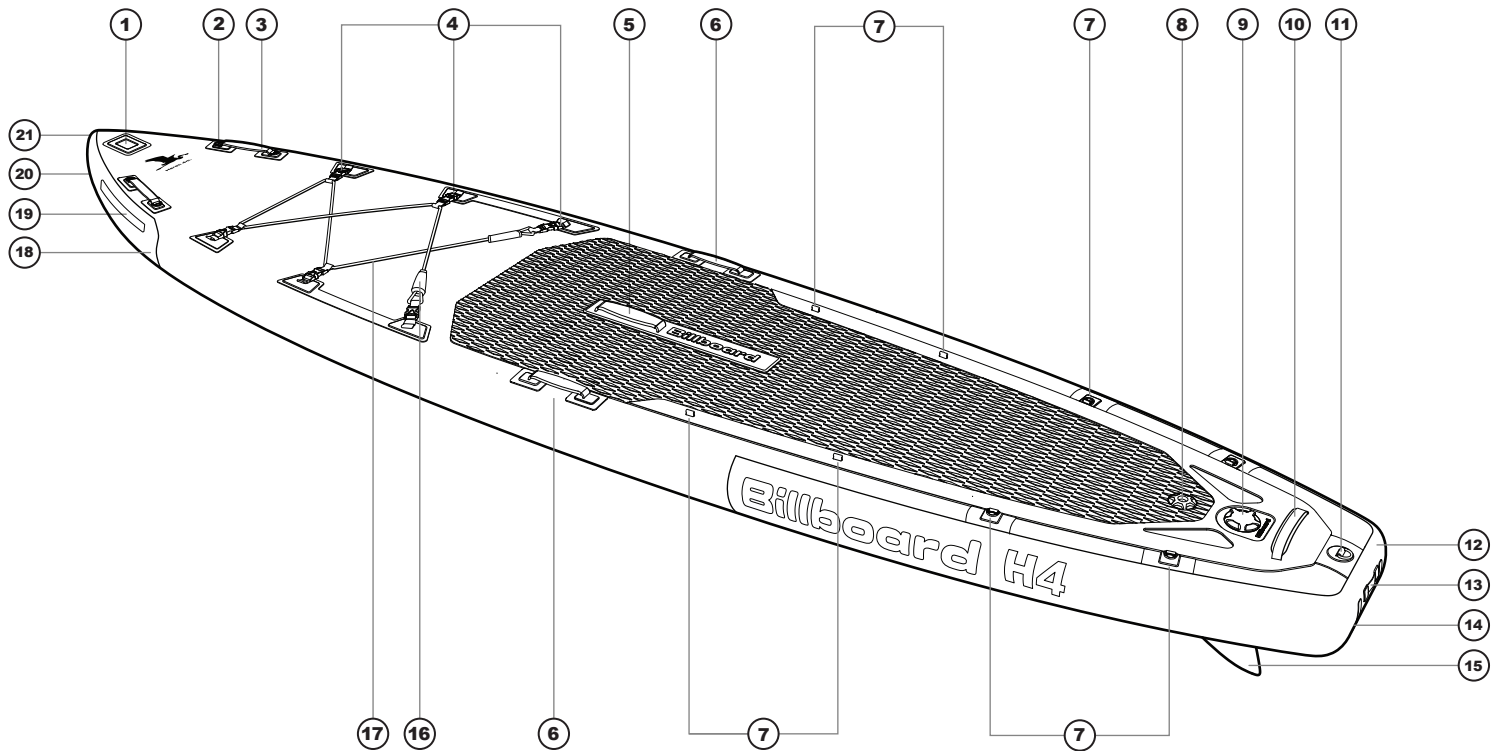
" - THE BOARD IS CALLED THE HERON, BECAUSE LIKE THE HERON IT THRIVES IN A BIG CITY AS WELL AS THE MOST REMOTE PARTS OF THE PLANET. IF YOU SEE A HERON, IT'S A GREAT SIGN THAT WATER IS IN GOOD CONDITION!"



Heron 4m.

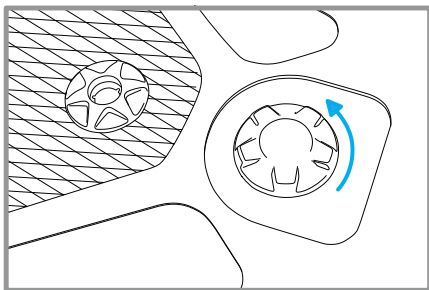
BILLBOARD H4 FEATURES

HERON 4 METER EXPEDITION SUP

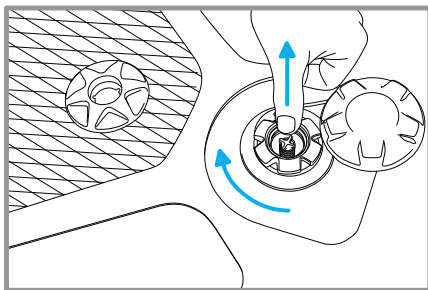


- 1 ACTION CAM MOUNT**
COMPATIBLE WITH GO-PRO AND MANY OTHER ACTION CAMERAS. USE WITH A STICKY MOUNT. WORKS BOTH FORWARD AND REAR FACING
- 2 COMPASS MOUNT**
ATTACHMENT POINTS FOR A MARINE COMPASS SUCH AS THE GARMIN 58 AVAILABLE IN OUR STORE
- 3 GRAB HANDLES - FRONT**
MAKES PULLING THE BOARD OUT OF THE WATER EASY AND ENABLES TWO PEOPLE TO CARRY THE BOARD
- 4 CARGO SYSTEM**
OUR PATENTED CARRY ON BOARD SYSTEM CAN HOLD A WIDE RANGE OF BAGS AND ACCESSORIES
- 5 CARRY HANDLE - CENTRE**
PADDED CARRY HANDLE WITH REFLECTIVE PIPING AND RUBBER REINFORCEMENT PLATE FOR EXTRA STRENGTH
- 6 RESCUE HANDLES**
SELF RESCUE MADE FAST AND EASY. PLACED AT THE POINT OF BALANCE MAKING THEM IDEAL SECONDARY CARRY HANDLES
- 7 REAR CARGO LOOPS**
CARRY LARGE AMOUNTS OF KIT WITH 8 ATTACHMENT POINTS. BALANCE THE WEIGHT FRONT AND REAR
- 8 A6 PRESSURE RELIEF VALVE**
DESIGNED TO LET AIR OUT AT 20PSI. PREVENTING EXCESSIVE PRESSURE BUILD UP INSIDE THE BOARD
- 9 LEAFIELD D7 VALVE**
A DEDICATED LOW PROFILE SUP VALVE LEGENDARY BRITISH QUALITY AND DESIGN. THE BEST SUP VALVE THERE IS
- 10 GRAB HANDLE REAR**
MAKES PULLING THE BOARD OUT OF THE WATER EASY AND ENABLES TWO PEOPLE TO CARRY THE BOARD
- 11 SUP LEASH MOUNT**
STAINLESS STEEL LEASH D-RING. PLEASE CHECK YOUR LOCAL SUP COMMUNITY FOR GUIDE LINES ON LEASH USE IN YOUR AREA
- 12 REINFORCEMENT - REAR**
A LAYER OF MATERIAL ADDED TO THE SIDE WALL GIVING EXTRA PROTECTION AGAINST BUMPING IN TO PIERS AND JETTIES ETC.
- 13 LIGHT MOUNT - REAR**
ATTACHMENT POINT FOR AN ORBILOC LIGHT. STAY SAFE AND BE SEEN AT NIGHT AVAILABLE FROM OUR STORE
- 14 SAFETY MARKING - REAR**
STAND UP FOR WHAT YOU BELIEVE.COM IS OUR PLACE FOR PEOPLE TO RAISE AWARENESS ABOUT THE COURSES THEY PADDLE FOR
- 15 US. FIN BOX**
THE PROVEN US. FIN BOX SYSTEM IS TOUGH AND RELIABLE. OUR FINS ENSURES GREAT TRACKING AND STABILITY
- 16 SAFETY WHISTLE**
90DB WHISTLE LOCATED INSIDE THE BLACK NEOPRENE TUBE AT THE BASE OF THE BUNGEE CORD
- 17 9MM BUNGEE CORD**
EXTRA TOUGH REFLECTIVE BUNGEE CORD WITH ADJUSTABLE LENGTH THE BOARD STRAP CAN EXPAND THE CARGO SYSTEM
- 18 REINFORCEMENT - FRONT**
A LAYER OF MATERIAL ADDED TO THE SIDE WALL GIVING EXTRA PROTECTION AGAINST BUMPING IN TO PIERS JETTIES ETC.
- 19 SAFETY MARKINGS - FRONT**
REFLECTIVE MARKERS ENSURES VISIBILITY AT NIGHT. HANDLES LOGOS AND CARGO SYSTEM ALL HAVE REFLECTIVE DETAILS
- 20 TOW RING**
STAINLESS D-RING FOR TOWING THE BOARD (AT MODERATE SPEEDS) USE ALSO TO MOORING UP THE BOARD
- 21 LIGHT MOUNT - FRONT**
ATTACHMENT POINT FOR AN ORBILOC LIGHT STAY SAFE AND BE SEEN AT NIGHT AVAILABLE FROM OUR STORE

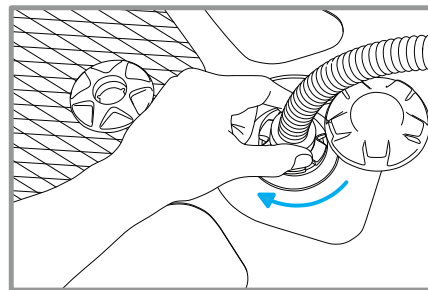
INFLATING THE BILLBOARD



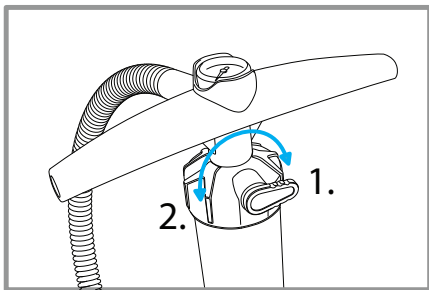
1. UNROLL THE BOARD ON A FLAT SURFACE. AND UNSCREW THE VALVE COVER.



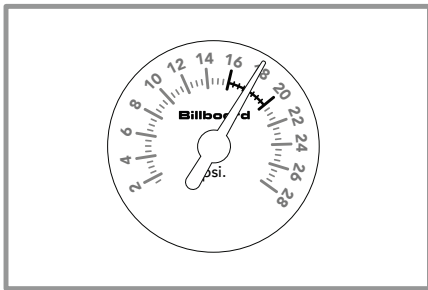
2. PRES AND TURN THE RED CROSS CLOCKWISE, MAKING SURE IT IS IN THE UPPER POSITION BEFORE INFLATION



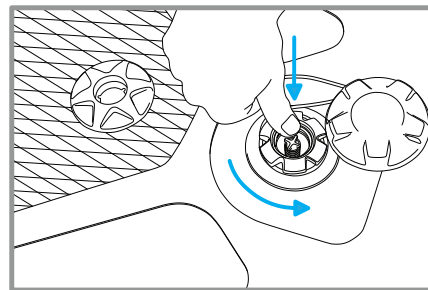
3. SCREW THE HOSE ON TO THE VALVE, MAKING SURE THE THREAD IS FIRMLY IN PLACE.



4. START PUMPING WITH LEVER POINTING RIGHT FOR DOUBLE ACTION, THEN SWITCH TO HIGH PRESSURE MODE AS PUPING GETS HARDER, BY TURNING THE LEVER LEFT.

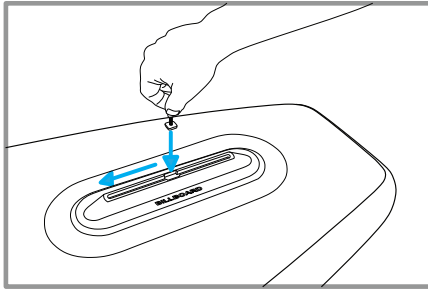


5. INFLATE TO 15-18PSI. TO GET THE RIGHT PERFORMANCE FROM THE BOARD. NOTE THAT THE GAUGE NEEDLE WILL ONLY START READING WHEN THE BOARD IS AT 3PSI OR MORE

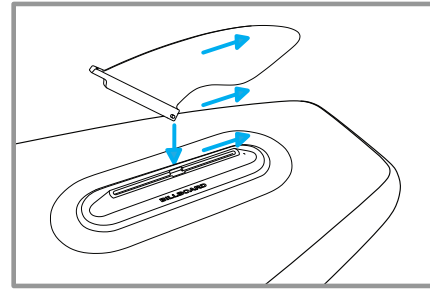


6. TO DEFLATE: PRESS AND ROTATE THE RED CROSS COUNTER CLOCK WISE, LEAVING IT IN THE LOW POSITION.

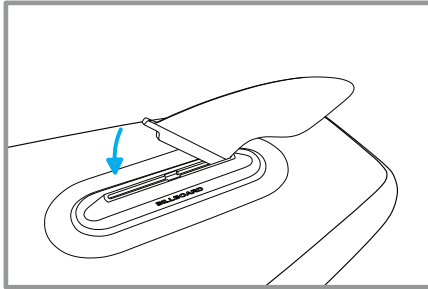
INSTALLING THE FIN



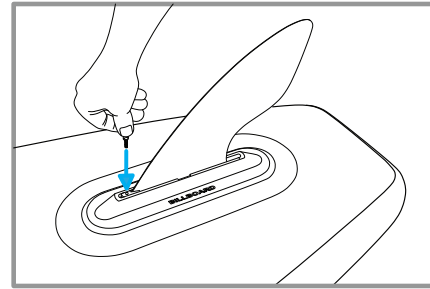
1. REMOVE THE FINSCREW FROM THE FIN, INSERT THE SQUARE NUT INTO THE OPEN SECTION OF THE FINBOX AND SLIDE IT FORWARD USING THE FINGER SCREW TO HOLD THE NUT.



2. INSERT THE BACK OF THE FIN IN TO THE OPEN SECTION OF THE FINBOX AND SLIDE IT BACKWARDS.

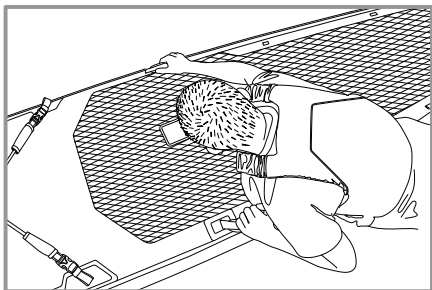


3. PRESS THE FIN BASE INTO THE FINBOX ALIGN THE HOLE IN THE FIN WITH THE KNOT INSIDE THE FINBOX.



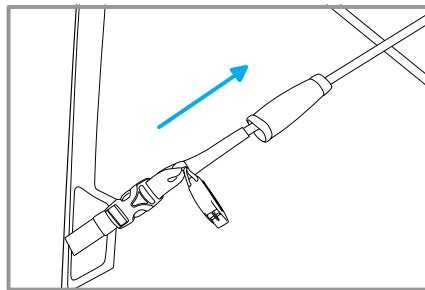
4. SECURE THE FIN WITH THE FINGER SCREW. BILLBOARD FINS ARE SUPPLIED WITH A SPARE SCREW.

RESCUE HANDLES



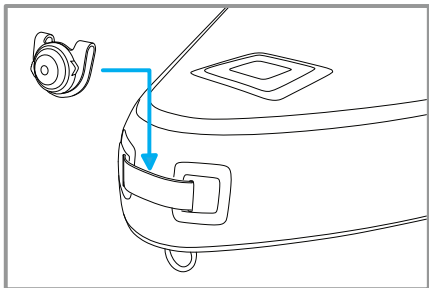
USE THE RESCUE HANDLES TO QUICKLY GET BACK ON THE BOARD BY GRABBING THE HANDLE ON THE OPPOSITE SIDE AS SHOWN.

SAFETY WHISTLE



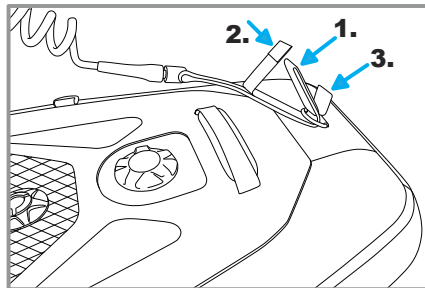
A SAFETY WHISTLE IS LOCATED INSIDE THE LEFT NEOPRENE COVER ON AT THE BASE OF THE CARGO SYSTEM.

SAFETY LIGHTS - ORBILOC



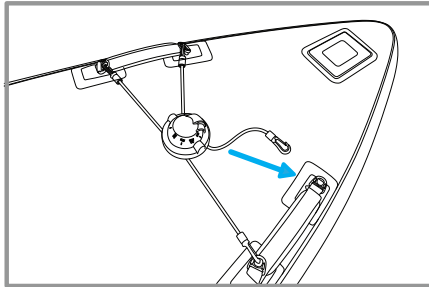
ORBILOC SAFETY LIGHTS CAN BE MOUNTED FRONT AND REAR ON THE BOARD.

SAFETY LEASH



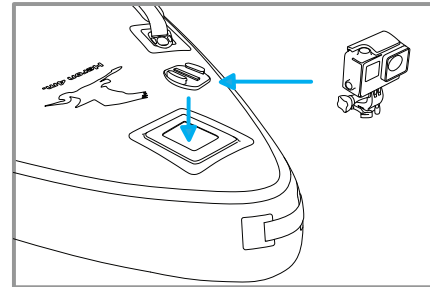
THE QUICK RELEASE SUP LEASH IS MOUNTED TO THE REAR D-RING BY FOLDING THE VELCRO LOCK AS SHOWN.

COMPASS



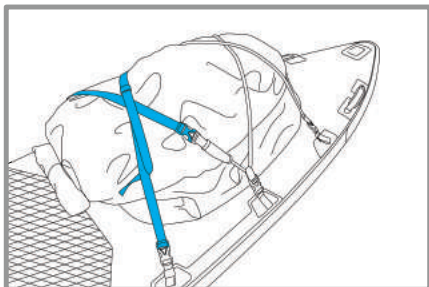
A MARINE COMPASS LIKE THE GARMIN 58 CAN BE MOUNTED TO THE 4 D-RINGS LOCATED BY THE FRONT HANDLES.

GOPRO MOUNT



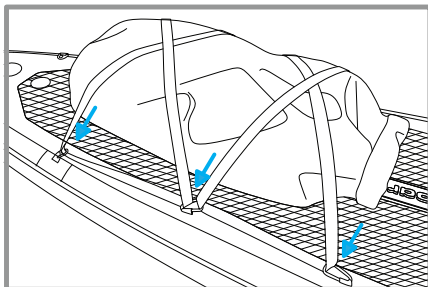
ACTION CAMERAS LIKE GOPRO CAN BE ACTTACHED TO THE BOARD USING A STICKY MOUNT AS SHOWN THIS WILL ALLOW THE CAMERA TO FILM BOTH FRONT AND REAR FACING.

BOARD STRAPS



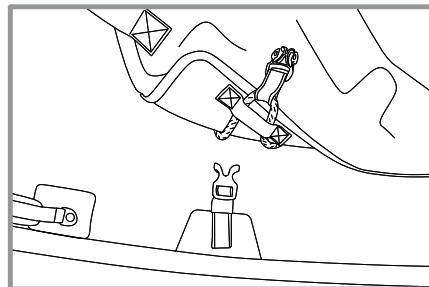
THE BOARD COMES WITH TWO STRAPS AROUND IT, THEY CAN BE USED TO EXTEND THE CAPACITY OF THE CARGO SYSTEM WHEN CARRYING BIG LOADS.

REAR CARGO LOOPS



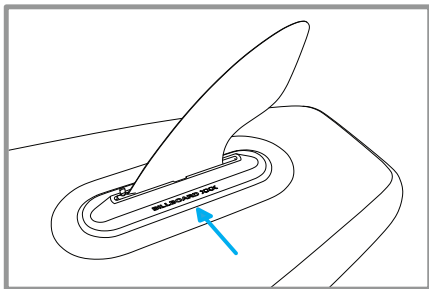
THE REAR CARGO LOOPS CAN BE USED WITH EITHER HOOKED BUNGIE CORDS OR WITH CARABINERS AND WEBBING AS SHOWN.

CARRY BAG



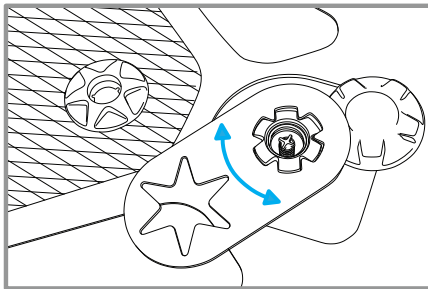
THE BOARD BAG CAN BE ATTACHED DIRECTLY TO THE BOARD. THREAD THE CAM BUCKLES THROUGH THE LOOPS ON BACK OF THE BAG AND CLICK ON TO DECK.

SERIAL NUMBER



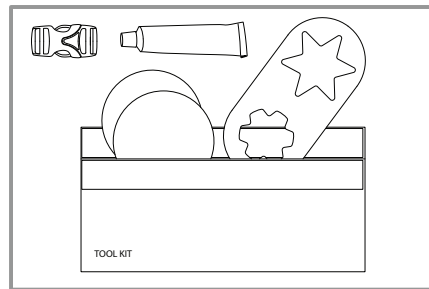
THE SERIAL NUMBER IS LOCATED BY THE FINBOX. PLEASE USE IT TO REGISTER ON BILLBOARDSUP.COM TO CLAIM YOUR 1 YEAR WARRENTY.

VALVE WRENCH



THE INFLATION AND PRESSURE RELIEF VALVE CAN BE TIGHTNED WITH THE LEAFIELD TOOL LOCATED INSIDE THE PUMP BAG.

TOOL KIT



THE TOOL KIT IS LOCATED INSIDE THE PUMP BAG IT CONTAINS A SPARE BUCKLE, GLUE, 2 PATCHES AND VALVE TOOL.



Heron 4m.

BillboardSup.com

© 2019 Billboard Sup. All rights reserved.